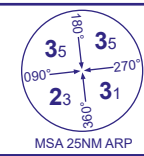


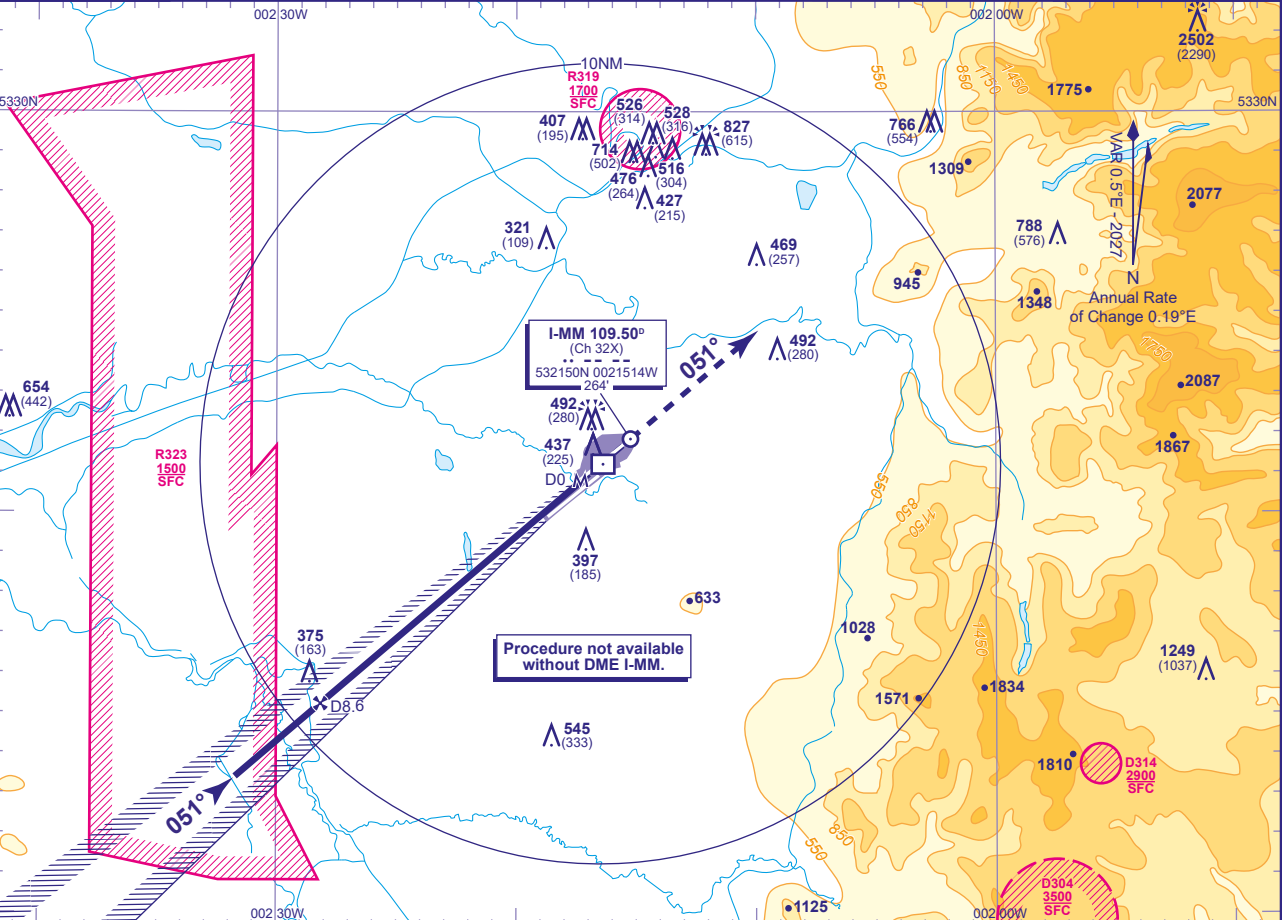
INSTRUMENT APPROACH CHART - ICAO

MANCHESTER
LOC/DME
RWY 05L
(ACFT CAT A,B,C,D)

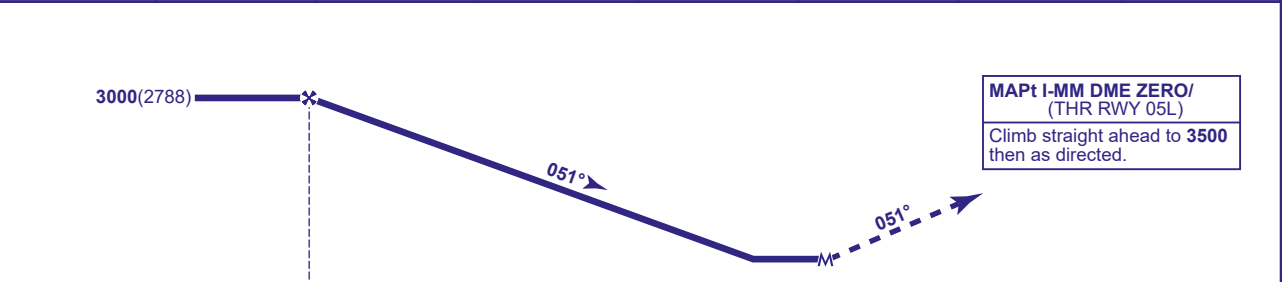


APP	118.580, 135.005	MANCHESTER RADAR	AD ELEVATION	257
	121.355	MANCHESTER DIRECTOR	THR ELEVATION	212
TWR	118.630, 119.405	MANCHESTER TOWER	OBSTACLE ELEVATION	2502 AMSL (2290) (ABOVE THR)
	121.855, 121.705	MANCHESTER GROUND		
ARRIVAL ATIS	128.180	MANCHESTER INFORMATION	BEARINGS ARE MAGNETIC	

TRANSITION ALTITUDE
5000



RECOMMENDED PROFILE Gradient 5.2%, 318FT/NM							
DME I-MM	8	7	6	5	4	3	2
ALT(HGT)	2820(2608)	2500(2288)	2180(1968)	1860(1648)	1540(1328)	1220(1008)	910(698)



D8.6 0 DME I-MM zero ranged to THR RWY 05L

Aircraft Category		A	B	C	D	Rate of descent	G/S KT	160	140	120	100	80
OCA (OCH)	Procedure	640(428)	640(428)	640(428)	640(428)		FT/MIN	850	740	640	530	420
VM(C)OCA (OCH AAL)	Total Area	740(483)	800(543)	1110(853)	1110(853)							

NOTE 1 RCF: Refer to AD 2.22.